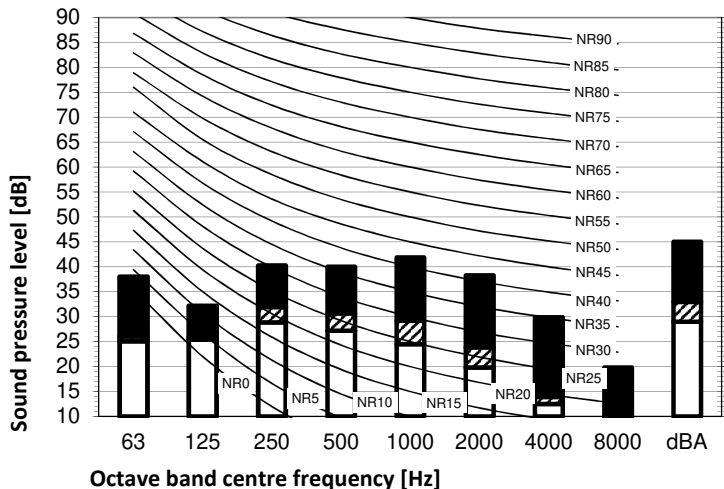
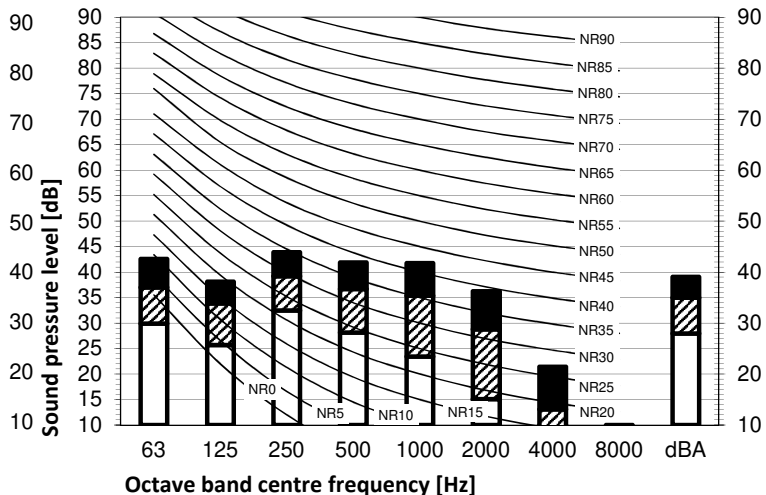


Cooling mode



Heating mode

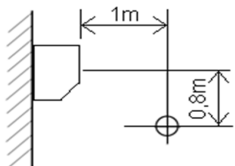


Legend

dBA = A-weighted sound pressure level (A scale according to IEC).

- A Scale
- B High-tap
- C Medium-tap
- D Low-tap

Location of microphone



Notes

1. Operating conditions: power source 220-240 V/220 V 50/60 Hz; JIS standard
2. Background noise already taken into account.
3. Operating noise varies depending on operation and ambient conditions.
4. The operation noise measuring method is in accordance with JISC9612.
5. Measuring location: anechoic chamber

Cooling

Total dB

A	B	C	D
dBA	45	33	29

Heating

Total dB

A	B	C	D
dBA	39	35	28