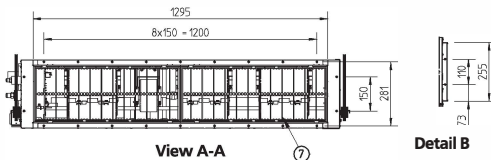
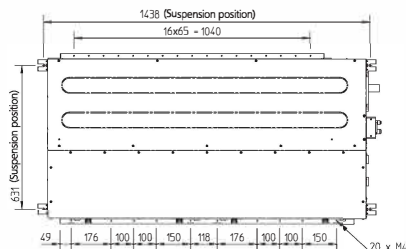
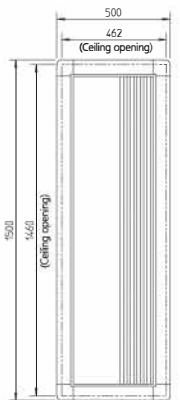
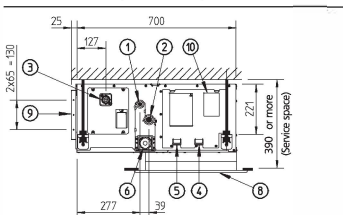
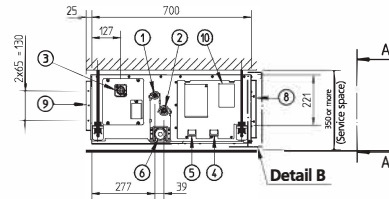
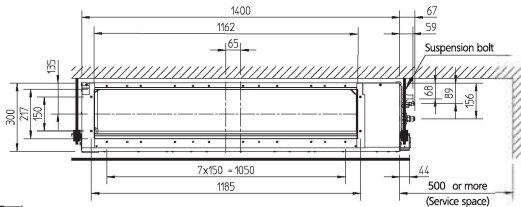
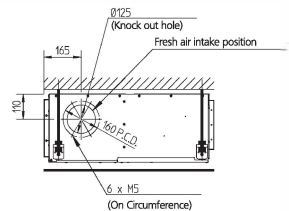


FDA125A



Item	Name	Description
1	Liquid pipe connection	∅ 9.53 Flare connection
2	Gas pipe connection	∅ 15.90 Flare connection
3	Drain pipe connection	VP25 (I.D. ∅ 32, I.D. ∅ 25)
4	Remote controller wiring connection	-
5	Power supply connection	-
6	Drain hole	VP25 (I.D. ∅ 32, I.D. ∅ 25)
7	Air filter	-
8	Air suction side	-
9	Air discharge side	-
10	Nameplate	-

NOTES

- 1 Refer to the outlook drawing of optional accessories when installing them.
- 2 The required ceiling depth varies according to the configuration of the specific system.
- 3 For maintenance of the air filter, it is necessary to provide a service access panel.
- 4 Optional decoration panel: BYBS125DJ/W1 (Light ivory white 10Y9/0.5)